



Helios Quartz Group SA
Production Site / R&D and
Technical Center

Via Roncaglia 20 6883

Novazzano - Svizzera

+41 (0) 919233555/6

+41 (0) 919233557

swiss@heliosquartz.com

www.heliosquartz.com



Helios Quartz America Inc.
Distributor – Logistic and Technical
center for North America region

7345 W. Sylvania Ave

Sylvania, OH 43560

+1 (419) 882-3377

+1 (419) 787-8307

america@heliosquartz.com

www.heliosquartz.com



Helios Quartz Asia Ltd.
Distributor and Logistic center
for Asia Pacific region

Suite 3002, 30/F,

Oxford House,

979 King's Road,

Quarry Bay, Hong Kong

+86 (132) 38830625

asia@heliosquartz.com

www.heliosquartz.com



Helios Italquartz S.r.l.
Production Site / R&D and
Technical Center

Via delle Industrie 103/A 20040

Cambiago - Milano - Italia

+39 02 95 34 93 18

+39 02 95 34 50 85

italy@heliosquartz.com

www.heliosquartz.com



Shenyang Helios Tech. Co. Ltd
Distributor and Logistic center
for China Mainland region

Building A, 1506 Midland Tower. No.208

Changjiang S.St. Huanggu District,

Shenyang, China

+86 024-3163319

china@heliosquartz.com

www.heliosquartz.com



Helios Quartz Turkey
Commercial branch
for Turkey region

Mimaroba Mh. Mustafa Kemal Bulvarı.

Colorist A Blok. Kat 3 D.50

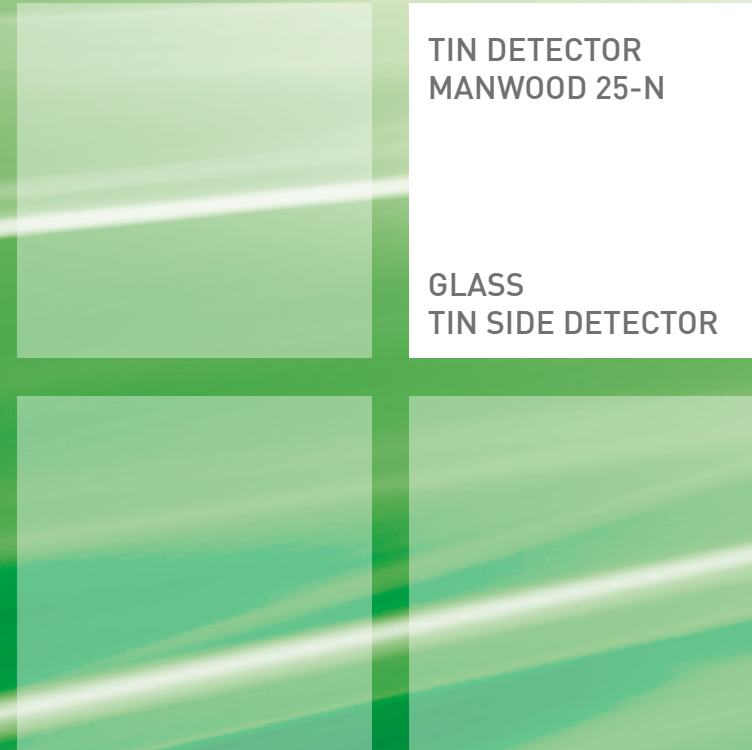
Mimaroba, Büyükçekmece

Istanbul

+90 8502281908

turkey@heliosquartz.com

www.heliosquartz.com



EQUIPMENT

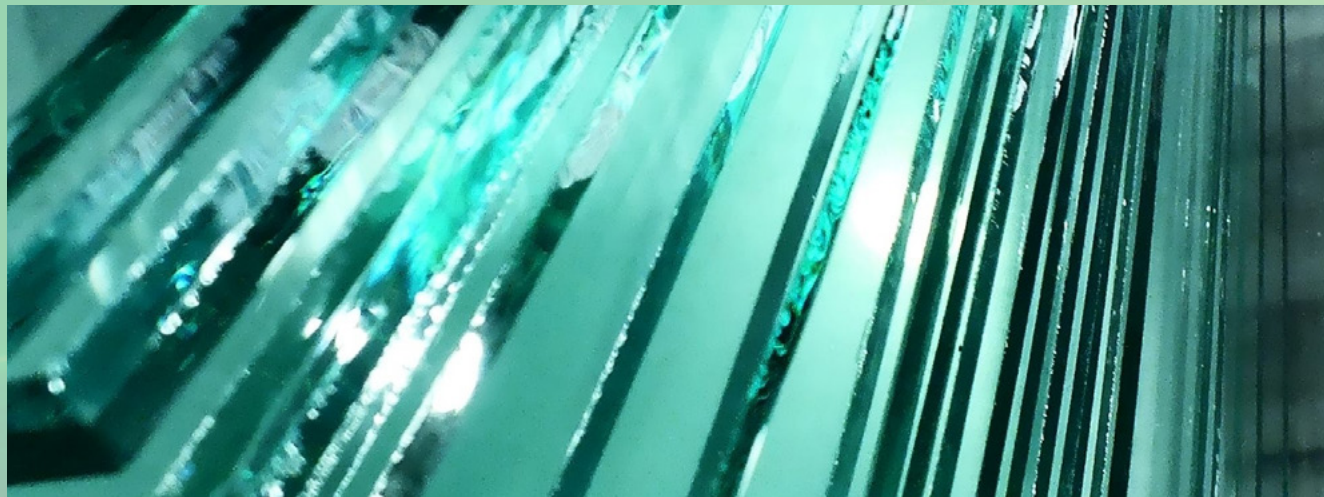
GLASS TIN SIDE DETECTOR SERIES

Float glass sheets are produced by a "float" process and they have a clean face otherwise called the "air side" and a face covered with a thin tin film called "tin side".

In the glass industry, glass sheets are commonly used in mirroring, lamination and screen printing processes and for the production of design and artistic glass products, such as tables, chairs, sink, etc.

Glass sector operators manifested the necessity and the need to distinguish and select properly the "air side" of the glass sheet on which to perform the processes mentioned above; if these processes should occur on the "tin side", they would compromise both the processing quality and the duration and conformity of the product itself.

HELIOS QUARTZ, thanks to its strong experience in the glass industry, has developed the best quality control solution for all operators in the glass industry by offering them our line of TIN SIDE DETECTORS, suitable both for the need of a manual control



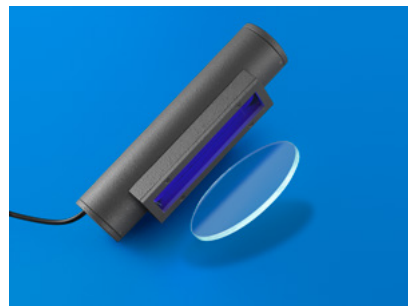
MANWOOD 25-N

Our Manwood 25-N device is universally recognized as the most professional glass "tin side detector" available on the market.

Conceptually, it exploits the phenomenon of fluorescence in materials subjected to a particular UV radiation, in order to identify the tin side of float glass sheets; in fact, it is enough to irradiate the glass plate and even the less experienced operator will immediately realize that one side of the glass surface will turn to a milky color (tin side), while the opposite side will keep its transparency (air side).

Helios Quartz MANWOOD25-N was originally developed for scientific applications in universities and research centers, with particular attention paid to the materials used, to the design and to the compliance with safety regulations.

For these reasons, if compared to similar products available on the market, it stands out for its ease of use in any environment, for the clear and immediate feedback given to the operator and for the opportunity to analyze even dark glass and low-E glass.



MANWOOD 25-N

Code 86L00007

SIZES:

ø 6,3 x 27,5 cm

filter:

18 x 5 x 2,5h cm

WEIGHT: 0,7 Kg

AUTOMATIC TIN DETECTOR COMPACT VERSION

and for the need to install a detector directly on the mass production line.

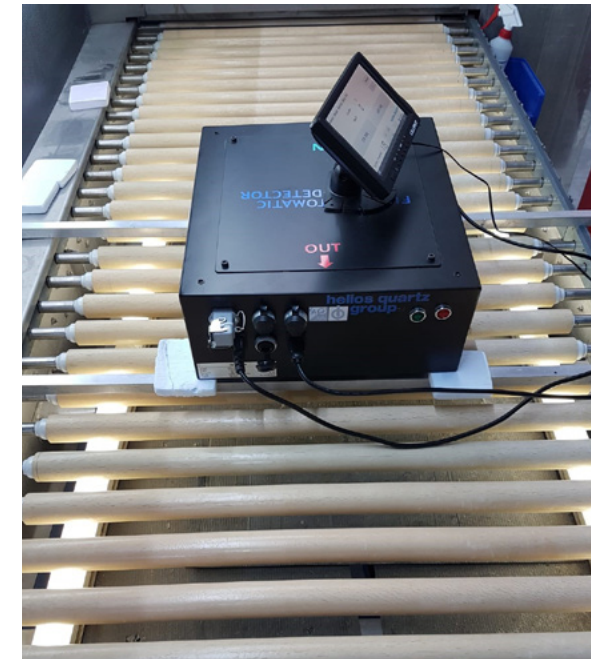
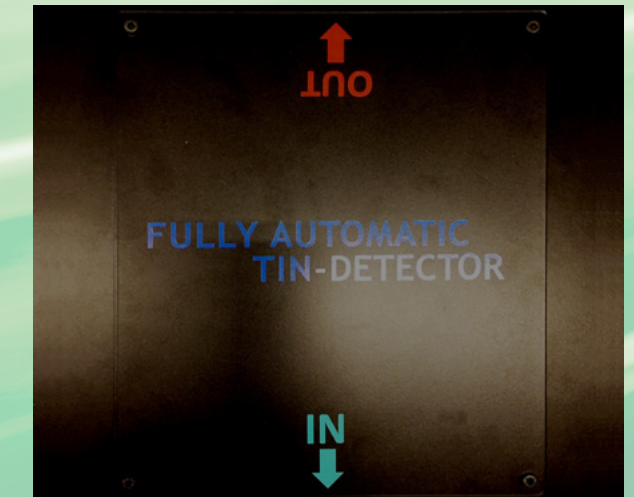
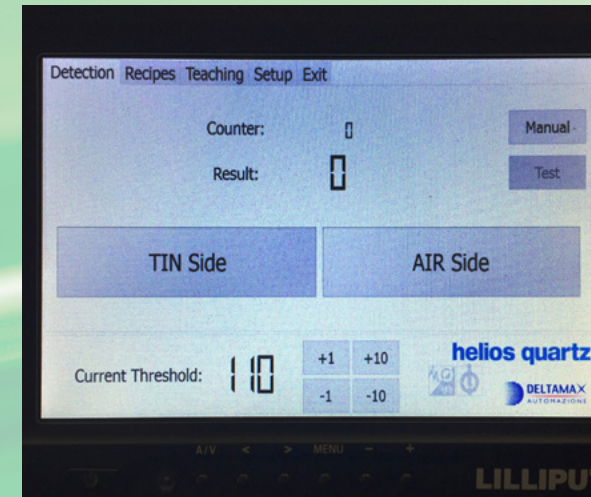
AUTOMATIC TIN DETECTOR is a device developed by Helios Quartz to meet the demand of customers, usually large glass operators with in-line processes, who want the certainty that the whole process is made on the right side of the glass sheets.

The device, although based on the same technology of the manual device Manwood 25-N, is able to indicate automatically the presence of the tin side or the air side of float glass sheets. It is usually mounted above the glass sheets on the conveyor belt and it scans all the glass sheets that will enter the processing stage.

The device is designed to interface directly with the

production line's control panel, instantly signaling with a green LED if it is scanning the air side; while, if the device scans the "tin side", a red LED flashes. The device has an open contact and the customer can connect it to the control panel of the line and decide to translate this signal into an alarm sound or even a direct command to block the line, thus allowing the operator to place the glass sheet in the right position.

The AUTOMATIC TIN DETECTOR - compact version is an extremely reliable indicator of the tin side of glass sheets and it provides the certainty of a constant monitoring of the materials used in the production process, eliminating any possible human error even in the presence of dark glass and / or anti-reflective glass.



MAIN APPLICATIONS

- Mirroring lines
- Glass Laminating lines
- Glass Screen Printing lines
- For the production of design and artistic glass products (ie. tables, chairs, sink, etc.)

AUTOMATIC TIN DETECTOR

Compact version

Code 86L00015

AUTOMATIC TIN DETECTOR

Compact version (With Modbus protocol option)

Code 86L00016

